

# Lowel Rifa eXchange Accessory Lamphead Instructions

## eXchange Lamphead Warnings

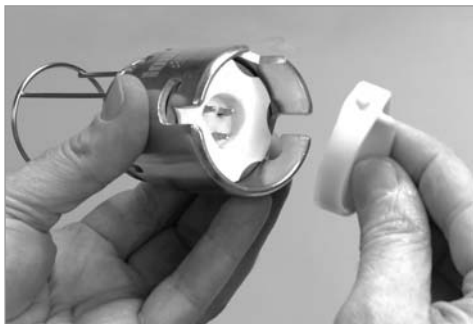
The Lowel Rifa eX and its accessory head system are professional lighting instruments. Read these instructions and lamp manufacturer's warnings carefully before operating.

- To remove head, make sure fixture is unplugged, and cool to touch. If using FLO-X3 head, remove lamps first.
- Always grasp fluorescent lamps by base to remove or install.

## Rifa eX Warnings

- Do not pull power cable to open fixture.
- Always operate with diffuser safety panel in place.
- Not for household use, use only for photographic lighting (film; video; imaging) purposes.
- Do not leave Rifa eX unattended.
- Allow unit to cool for 5 minutes before changing lampheads or storing.
- Do not use more than one diffuser, nor any diffuser other than the Lowel Rifa diffuser supplied.
- Make certain that lamp voltage matches power source voltage. The units use lamps of different voltages (Example: never connect a 120 volt lamp to a 230 volt source, or a 12 or 30 volt lamp to any higher voltage).
- Do not exceed maximum rated wattage for unit.
- Make certain to attach appropriate approved power cable for voltage being used.
- Do not interfere with unit's ventilation.
- Never touch hot parts.
- Units such as this emit considerable light and heat, if not properly used could be dangerous.
- Avoid placing unit too close to faces, delicate objects or flammable materials.
- Do not use near standing water or in damp locations.
- When mounting light overhead use Safety Cables.
- Unplug before cleaning material. Handle reflector with care. Clean with a damp cloth only, as soap or chemical cleaners may damage material. Do not operate while fixture is damp.

When not in use, protect lampheads with supplied cap.



## Exchanging Heads

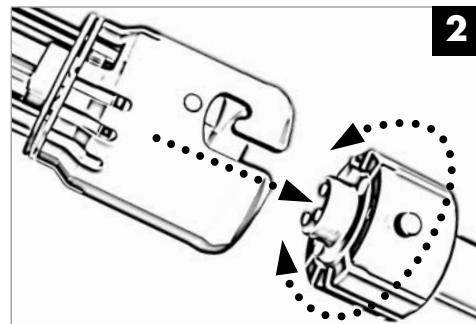
The Accessory lampheads of the Rifa eXchange System offer increased versatility to Rifa users. Now your Rifa eX can use screw-threaded daylight fluorescent lamps, or lower wattage & lower voltage tungsten halogen lamps. If you use your Rifa eX with its standard supplied lamphead, you would still set up & strike in the normal manner. The standard supplied head for the Rifa eX models 55, 66 & 88 is the TH-X1000. The standard supplied head for the Rifa eX 44 is (the lower max. wattage) TH-X300. The TH-X300 head will fit the 55, 66 & 88 Rifa eX's, but the TH-X1000 will not fit the Rifa eX 44. See the chart on the backside of this sheet for more information.

If you use the fluorescent accessory heads, you will find that you can't pack up the light with them installed. Recommended practice is to store the Rifa eX with its supplied lamphead installed. It is not necessary to remove the supplied standard head when storing or shipping the light. When storing the accessory lampheads, use the supplied protective cap to cover the lamphead connection pins.

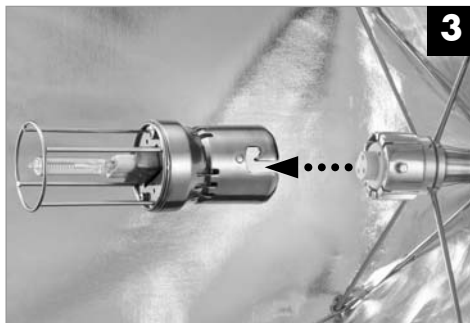
Before removing the standard lamphead, make sure Rifa is on a stand, unplugged and cool to touch. Follow the steps below:



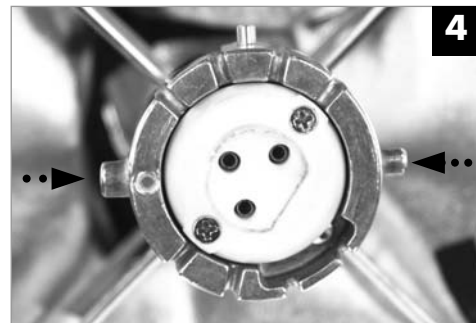
With Rifa on stand, and unplugged, grasp rear stem firmly with one hand, and lamphead with the other.



Push in on lamphead, and twist to unlock side pins from lamphead J-hook cutout.



Carefully remove lamphead.



Orient replacement head J-hook cutouts with correct pins (1 larger, 1 smaller).  
Reminder - Rifa eX 44 will not accept TH-X1000 lamphead.



Push in and twist lamphead, locking Rifa base side pins to J-hook cutout.



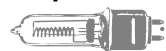
With lamphead securely in place, carefully install lamp(s).  
Grip base of fluorescent lamp when tightening, not glass section.

# Comparison of Lampheads

## TH-X1000

Standard Lamphead for all Rifa eX models **except EX 44**

### Lamp



Tungsten-halogen



### Lamp/Beam Data

Lamp Code	Volts	Watts	°K	Avg Life	FC(lux)5'	FC(lux)10'
<b>For Rifa eX 55 – Maximum 500w</b>						
EHC	120	500	3200	300 hr	72 (778)	19 (209)
EHD	120	500	3000	2000 hr	69 (745)	18 (198)
JCV 220V-500WBM	220	500	3000	2000 hr	78 (846)	21 (228)
JCV 240V-500WBM	240	500	3000	2000 hr	66 (710)	17 (188)
<b>For Rifa eX 66 – Maximum 750w</b> (May also use lamps for LC-55)						
EHF	120	750	3200	300 hr	109 (1180)	30 (326)
EHG	120	750	3000	2000 hr	89 (962)	24 (262)
FKR/240	240	650	3200	300 hr	92 (990)	25 (270)
<b>For Rifa eX 88 – Maximum 1000w</b> (May also use lamps for LC-66)						
FEL	120	1000	3200	300 hr	195 (2110)	56 (608)
FEP / 220	240	1000	3200	150 hr	178 (1920)	53 (567)
FEP / 240	240	1000	3200	150 hr	160 (1730)	45 (491)

## TH-X300

Standard lamphead for Rifa eX 44. Fits all Rifa eX models.

### Lamp



Tungsten-halogen



### Lamp/Beam Data

Lamp Code	Volts	Watts	°K	Avg Life	FC(lux) 5'	FC(lux) 10'
JCV14.5-50WC	12/14	50	3200	100 hr	7 (80)	2 (22)
GCC	12	100	3200	100 hr	8 (81)	2 (22)
GCB	30	200	3200	100 hr	20 (220)	5 (58)
FSH	120	125	3200	100 hr	15 (166)	4 (46)
FVM	120	105	3200	250 hr	14 (148)	4 (40)
FVL**	120	200	3200	200 hr	33 (356)	9 (100)
GCA	120	250	3200	100 hr	39 (418)	10 (111)
CP/96	120	300	3400	75 hr	49 (532)	14 (147)
GLF/P44	230	235	3200	100 hr	35 (381)	9 (102)
CP/97	230	300	3200	75 hr	54 (582)	15 (159)

\*\* Longer life lamp recommendation (slightly lower wattage).

These readings taken with Rifa 44 eX. For readings from other Rifa eX models, visit [www.lowel.com](http://www.lowel.com)

## FLO-X1

For all Rifa eX models

### Lamps



E1-27



X1-65



Daylight Fluorescent or Low Wattage Incandescent, Edison Screw-thread

### Lamp/Beam Data

Lamp Code	Volts	Watts	°K	Avg Life	FC(lux) 5'	FC(lux) 10'
<b>For Rifa eX 44 – Maximum 300w</b>						
E1-27	120	27	5500	8000 hr	10 (108)	3 (30)
E1-27E	230	25	5500	8000 hr	11 (114)	3 (31)
<b>For Rifa eX 55 – Maximum 500w</b>						
E1-27	120	27	5500	8000 hr	9 (92)	3 (31)
E1-27E	230	25	5500	8000 hr	9 (97)	3 (32)
<b>For Rifa eX 66 – Maximum 750w</b>						
E1-27	120	27	5500	8000 hr	10 (113)	3 (32)
E1-27E	230	25	5500	8000 hr	11 (120)	3 (34)
X1-65	120	65	5500	8000 hr	28 (303)	8 (83)
<b>For Rifa eX 88 – Maximum 1000w</b>						
E1-27	120	27	5500	8000 hr	10 (113)	3 (32)
E1-27E	230	25	5500	8000 hr	11 (120)	3 (34)
X1-65	120	65	5500	8000 hr	34 (365)	10 (104)

## FLO-X3

For all Rifa eX models

### Lamps



E1-27



X1-65



Individually  
switched  
lamps

Daylight Fluorescent, Edison Screw-thread

### Lamp/Beam Data (with all 3 Lamps Lit)

Lamp Code	Volts	Watts	°K	Avg Life	FC(lux) 5'	FC(lux) 10'
<b>For Rifa eX 44 – Maximum 300w</b>						
E1-27	120	27	5500	8000 hr	23 (250)	6 (69)
E1-27E	230	25	5500	8000 hr	25 (265)	7 (73)
<b>For Rifa eX 55 – Maximum 500w</b>						
E1-27	120	27	5500	8000 hr	22 (233)	7 (78)
E1-27E	230	25	5500	8000 hr	23 (252)	8 (85)
X1-65	120	65	5500	8000 hr	64 (696)	18 (199)
<b>For Rifa eX 66 – Maximum 750w</b>						
E1-27	120	27	5500	8000 hr	27 (293)	8 (85)
E1-27E	230	25	5500	8000 hr	29 (309)	8 (89)
X1-65	120	65	5500	8000 hr	67 (722)	18 (196)
<b>For Rifa eX 88 – Maximum 1000w</b>						
E1-27	120	27	5500	8000 hr	28 (307)	8 (88)
E1-27E	230	25	5500	8000 hr	29 (318)	9 (93)
X1-65	120	65	5500	8000 hr	77 (833)	22 (235)

## Lowel-Light Manufacturing, Inc.



140 58th Street Brooklyn, NY 11220  
**Call:** 800 334-3426 or 718 921-0600  
**Fax:** 718 921-0303  
**e-mail:** [info@lowel.com](mailto:info@lowel.com)  
**www.lowel.com**

## Problems, info, repairs, etc.

Lowel equipment and kits are sold through authorized Lowel Dealers and, in some countries, Authorized Lowel Distributors. Repairs, problems, suggestions, and requests for brochures, instructions, parts lists may be handled by your authorized Lowel Dealer (Distributor) or directly with Lowel. Electrical repairs should be made only by Lowel or a qualified electrician. Rifa-lite® is a registered trademark of Lowel-Light Manufacturing, Inc. U.S. Patent No. 4594645, 7081001, 7153153. ver: 1.1 © Lowel-Light Mfg., Inc. 2007