

IMPORTANT INFORMATION

lowel[®]ego[®]



Lowel Ego Assembly Notes

The Lowel Ego requires user assembly. See the other side of this page for illustrated assembly instructions. Remove contents from box and keep plastic bags away from small children.

When installing lamps, do not over tighten in socket. To prevent breakage, hold lamp by its base and NOT by the glass spiral.

Lowel Ego Fluorescent Lamps

Lamp Features:

These lamps are designed for imaging and are intended for use only with the Lowel Ego. They are 5500° K (daylight) color temperature, with a CRI (color rendering index) of 90+. Each lamp is 27 Watts, with an output roughly equivalent to a 100 Watt standard incandescent light bulb. Lamp life expectation is 10,000 hours. Instant start, flicker free. NOT DIMMABLE.

Lamp Replacement:

You must contact Lowel to replace a defective lamp. You can purchase a replacement lamp through a Lowel dealer or contact Lowel directly at 800 645-2522.

Lamp Warnings:

The lamps may cause interference with radios, cordless phones, televisions, and remote controls. If interference occurs, move this product away from the device or move to a different outlet.

- Lamps get hot during use, do not touch!
- For use in dry locations only.
- Not intended for outdoor use.
- Not intended for use with emergency exit fixtures or emergency lights.
- To prevent the risk of fire or product damage, do not use with dimmers, electronic timers, photocells or touch style lamps. Do not use in totally enclosed or recessed fixtures.
- Contains mercury, dispose according to local, state, or federal laws.

Lowel Ego Limited Warranty

Lowel-Light Manufacturing, Inc. ("Lowel") warrants that the Lowel Ego and its supplied lamps, under normal use, in accordance with operating instructions, will perform to the specifications published by Lowel at the time of purchase for 1 year.

In the event of a defect reported by the consumer within the year Lowel will, at its option, replace or repair the defective merchandise at no charge to the consumer for either parts or labor. Replacing the bulb is the sole lamp remedy available.

Procedure

In order to make a claim under the above warranty, the consumer must, within the year, bring or send, postage paid, the defective product and proof of purchase to a Lowel dealer or to the Lowel factory in Hauppauge, NY.

Warranty Exclusions

THE WARRANTY SET FORTH ABOVE IS THE ONLY WARRANTY MADE BY LOWEL WITH RESPECT TO LOWEL PRODUCTS AND LOWEL DISCLAIMS ALL WARRANTIES OF MERCHANTABILITY AND FITNESS FOR A PARTICULAR PURPOSE AND ANY LIABILITY WITH RESPECT TO SAME WHETHER IN CONTRACT, TORT OR OTHERWISE. IN NO EVENT SHALL LOWEL BE LIABLE FOR LOST PROFITS, OR ANY CONSEQUENTIAL OR INCIDENTAL DAMAGES INCURRED BY THE CONSUMER.



862

Some states do not allow limitations on how long an implied warranty lasts, and some states do not allow the exclusion or limitation of incidental or consequential damages, so the above limitation may not apply to you.

General

This warranty gives you specific legal rights, and you may also have other rights which vary from state to state.

Lowel Ego is designed and manufactured in the United States. Lamps made in China. Patent Pending.
ver 1.4 ©2009, Lowel-Light Mfg., Inc.

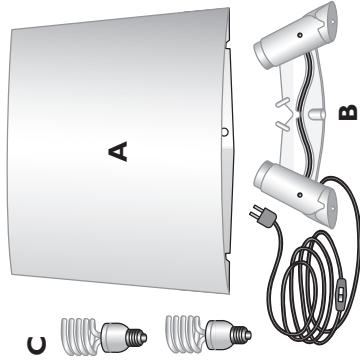
Lowel-Light Manufacturing

90 Oser Avenue
Hauppauge, NY 11788
Call: 800 645-2522
www.lowel.com

lowel[®]

TIFFEN[®]

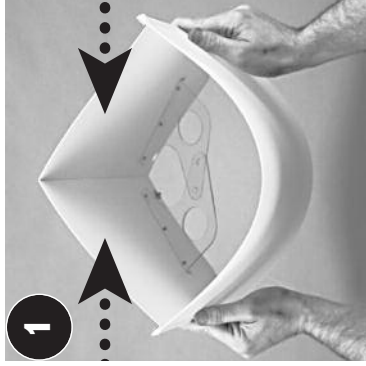
Assembling the Lowel® Ego® Light



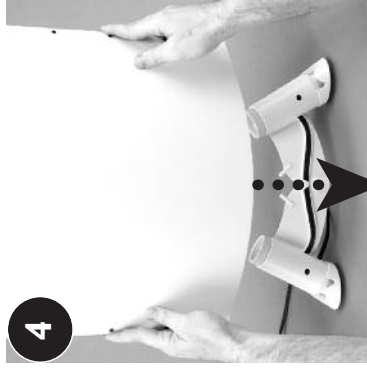
A Shade/diffuser

B Lamp socket housing

C Compact fluorescent lamps



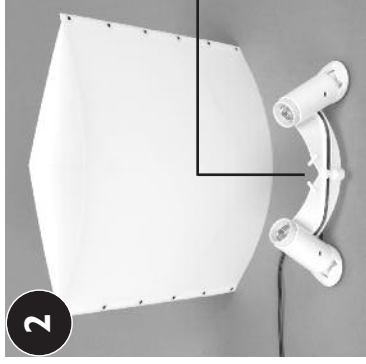
Squeeze shade/diffuser inward to flex it. Fold out both plastic flaps inside.



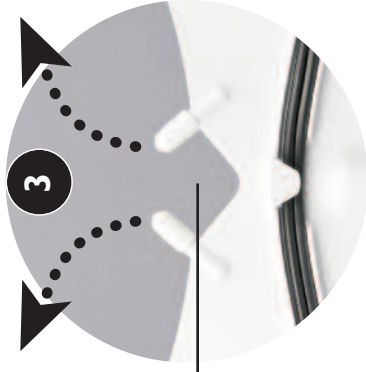
Place shade over lamp socket housing so the shade completely covers it.



From the top, it should look like this.



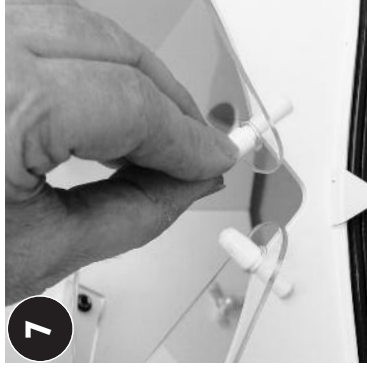
Place lamp socket housing on table with curved center towards you, as shown.



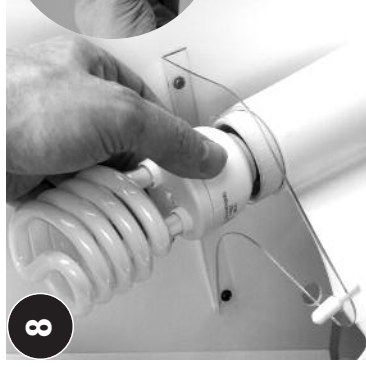
Remove rubber caps from center posts and set aside.



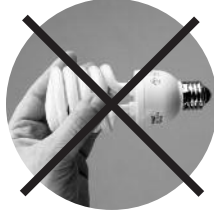
Reach into shade and press flaps down so large holes go over the sockets. Hook smaller holes to the center posts.



Push rubber caps back onto the center posts to secure flaps.



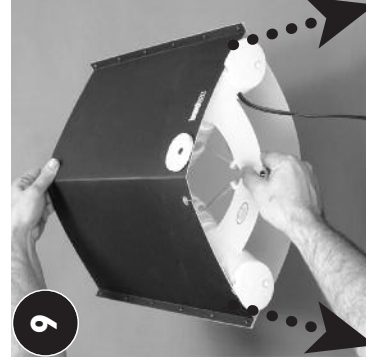
Right Way



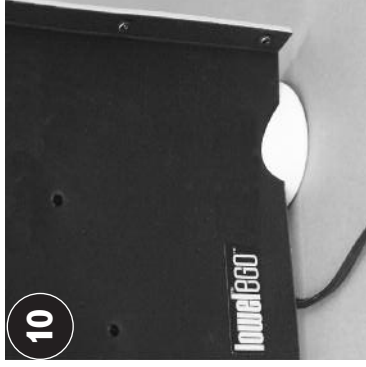
Wrong Way

Install compact fluorescent lamps as shown.

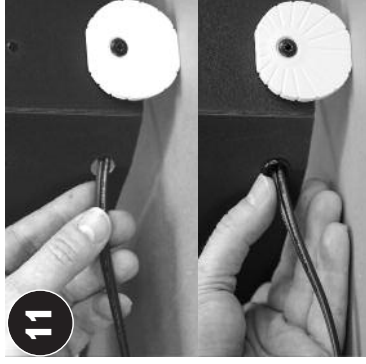
Warning: Grasp the lamp by its base to tighten, do not tighten by grasping the glass top. Lamp may easily break.



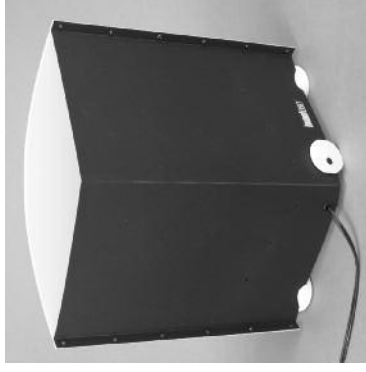
Grasp top of shade and gently pull the center of lamp socket housing slightly out of the bottom, hooking its feet into bottom back corners notches.



It should look like this.



Thread AC cable into rear cut-out hole & secure with the attached plastic grommet.



You are now ready to light with Lowel Ego.